

UNIVERSITY FOREST ENTERPRISE

University Forest Enterprise (UFE) of Technical University in Zvolen is a special purpose institution. Its aim is to maintain the practical education for study programmes at the Faculty of Forestry TU in Zvolen. Moreover, it serves as research laboratory for the departments of the Faculty of Forestry as well as for other departments of the university. University Forest Enterprise is an educational object for close-to-nature silviculture in Slovak Republic.



UFE was founded on January 1st, 1958. The original area was 5,375 ha. Nowadays it has the area of 9,833 ha, including 9,824 ha of state forest. UFE is divided into 2 forest districts.

Dominant, as a forestry laboratory, is forest district (FD) Budča.

Tree species composition FD Budča

European beech	52 %
Oak species	17 %
Hornbeam	10 %
Silver fir	9 %
Pine	7 %
Other tree species	5 %

Forest district fully applies the principles of the close-to-nature silviculture.

Dominant concepts are:

• MOSAIC STANDS - VALUE INCREMENT MANAGEMENT OF OAK



MANAGEMENT ECONOMY

Management economy:
 example compartment 584
 area: 13.92 ha
 forest type group: *Carpineto-Quercetum*
 growing stock: sessile oak 3,188 m³, Turkey oak 585 m³, hornbeam 487 m³, beech 334 m³, pine 264 m³

Volume structure of the value production bearers (target stems) according to the dbh ranges (in m³)

Tree species	dbh range			
	< 50 cm	51-55 cm	56-60 cm	60 + cm
Oak	408,5	171,1	97,7	135,4
Beech	13,0	3,1	4,3	34,0
Ash	5,1	0,0	0,0	0,0
Service t.*	2,7	0,0	0,0	0,0
Maple	1,5	0,0	0,0	0,0

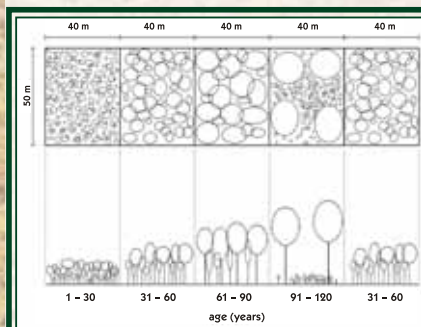
* wild service tree - *Sorbus torminalis* L.



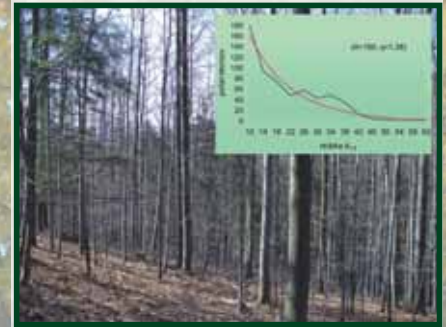
Actual revenues:

1 auction 132 m³ of oak with total revenue 42,964 EUR, average price 325 EUR/m³.

• VALUE INCREMENT MANAGEMENT OF BEECH - MOSAIC STANDS



• BEECH SELECTION FOREST



• SMALL-AREA SHELTERWOOD SYSTEM

Present structure of forests within University Forest Enterprise (forest district Budča):

✓ Stands with high ecological stability



✓ High biodiversity



✓ Excellent economic results

